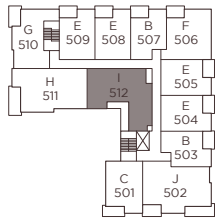
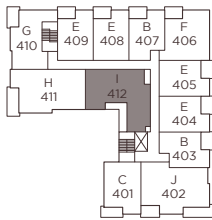
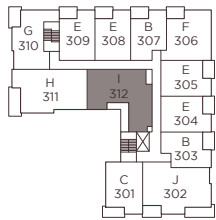
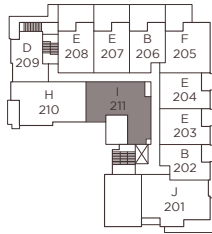


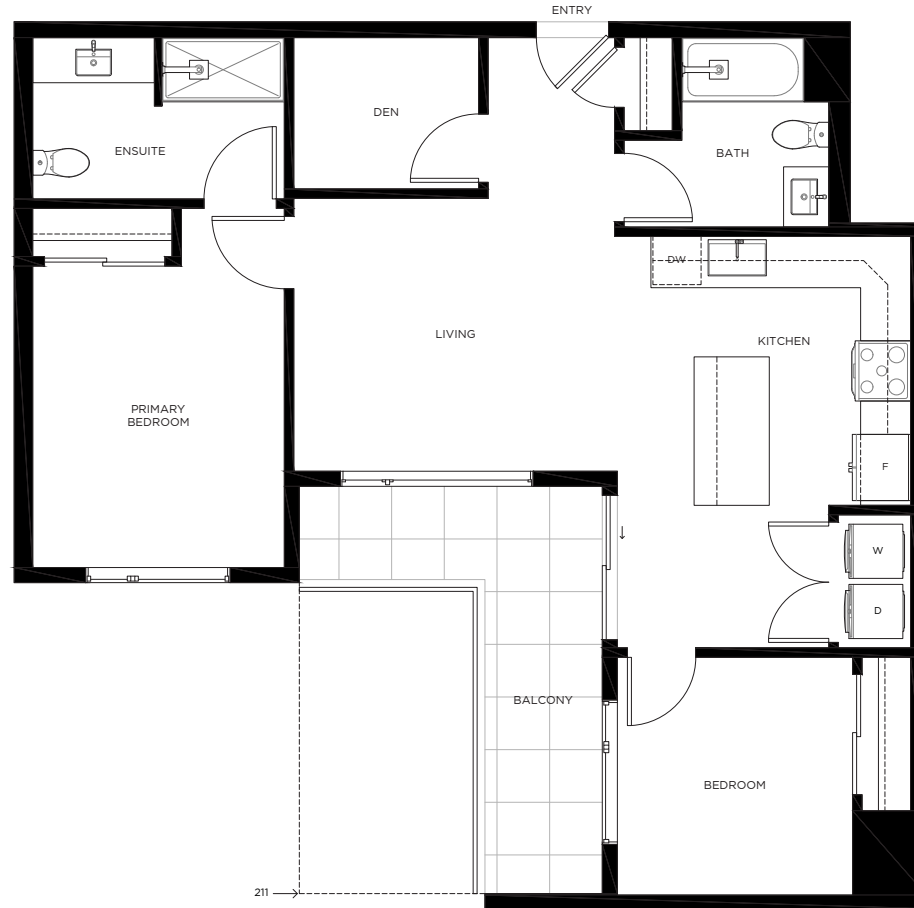
Chronicle

CLOVERDALE

2 BEDROOMS + DEN 2 BATHS
963 SQFT



* Adaptable



As of April 2024. In our continuing effort to improve and maintain the high standard of the Chronicle development, the developer reserves the right to modify or change plans, layouts, specifications, features, including appliances, and prices without notice. Materials may be substituted with equivalent or better at the developer's sole discretion. All dimensions and sizes are approximate and are based on architectural measurements. As reverse, flipped and/or mirrored plans occur throughout the development please see architectural plans for current unit layout, if material to your decision to purchase. Illustrations, renderings and marketing materials provided are an artist's conception and are intended as a general reference only, all subject to change without prior notice and not to be relied upon. Please ask one of the helpful sales staff to reference the current architectural set of construction drawings for the most accurate dimensions and other details at time of sale. E.&O.E. Sales & Marketing provided by Fifth Avenue Real Estate Marketing Ltd. 604-583-2212

